



## TR38160 | Telescopic Handlers



## Performance

Lifting height — on stabilisers	15700.0 mm
Lifting height — on tyres	15500.0 mm
Rated capacity	3800 kg
Capacity (at max. height on stabilisers)	2000 kg
Capacity (at max. height on tyres)	1700 kg
Capacity (at max. reach on stabilisers)	300 kg
Capacity (at max. reach on tyres)	300 kg
Max. reach on stabilisers	13350.0 mm
Max. reach on tyres	13350.0 mm

## Weights

Weight (unladen)	13100 kg
------------------	----------

## Traction

Standard tyres	18 — R22.5in
Standard tyres	18 — R22.5in
Low speed (forward/reverse)	9.0 km/h
High speed (forward/reverse)	24.0 km/h

## Drive System

Main drive	2-speed hydrostatic motor
Transmission	Hydrostatic with electronic regulation

## Engine

Make / Model	IVECO / NEF F4GE054A-TC
Fuel	Diesel
Cooling	Liquid
Rated power (DIN 6271) at 2200 RPM	74.0 kW
Maximum torque at 1400 RPM	410.0 Nm
Number of cylinders	4
Displacement	4485 cm <sup>3</sup>

## Hydraulic System

Pump type	Single gear pump
Working pressure	230.00 bar

## Cycle Times

Lift time - no load	23.0 s
Lower time - no load	19.0 s
Telescope in time at max. reach - no load	25.0 s
Telescope in time at max. height - no load	21.0 s
Telescope out time at max. reach - no load	31.0 s
Telescope out time at max. height - no load	29.0 s

## Brakes

Engine braking	Hydrostatic
Parking and emergency brake	Negative brake with electro-hydraulic command on rear axle

## Fluid Capacities

Axles and reduction gears front / rear	10.0/10.0 L
Engine oil	9.00 L
Fuel tank	126.00 L
Hydraulic reservoir [HYDRAULIC]	270.00 L

## Standard Features

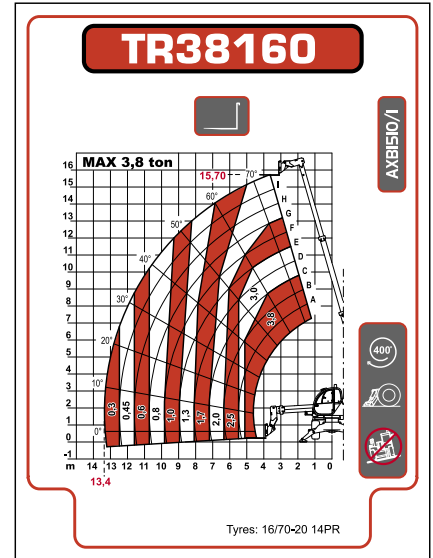
Man platform ready	Heating, demisting and ventilation
Hydrostatic transmission	Carriage with manual attachment lock
Two way hydraulic supply at the end of the boom	ROPS/FOPS operator cab
Back-up alarm	Front and rear washer/wipers
Boom stop	Suspension seat
Lockable fuel cap	Road lights

## Options

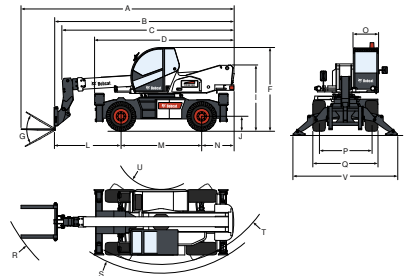
Custom colour	Second auxiliary hydraulic line with electrical line
Pneumatic seat (compulsory with double joystick)	Stabilizer security 30 degrees
Air conditioning	Sun visor
Windscreen grill	TÜV homologation
Anti-theft immobiliser	Under chassis protection
Auto-cleaning air prefilter	Work light on top of cabin
Centering handler and positive/negative jib pre-arrangement	2-speed accelerator adjustment for remote control
Cold weather kit	Boom light
Controls with double joystick	Carriage with hydraulic attachment lock
Electric contact on boom head	Catalytic purifier muffler
Limited slip differential for rear axle	Cold start
Pallet fork transversal block	Electronic accelerator adjustment for remote control
Radio with CD player	Webasto heater (Cold weather kit is compulsory)
Remote control	

## Load Charts

On stabilisers, with forks, 90°



## Dimensions



(A)	7765.0 mm	(N)	1170.0 mm
(B)	6565.0 mm	(O)	980.0 mm
(C)	6225.0 mm	(P)	1920.0 mm
(D)	4880.0 mm	(Q)	2380.0 mm
(F)	3000.0 mm	(R)	6230.0 mm
(G)	130°	(S)	4660.0 mm
(I)	2430.0 mm	(T)	4430.0 mm
(J)	340.0 mm	(U)	1700.0 mm
(L)	2510.0 mm	(V)	3968.0 mm
(M)	2950.0 mm		

Albers Fördertechnik GmbH & Co. KG  
 Hebelmeer 93  
 49767 Twist

T +49 (0)5935 / 70557-0  
 F +49 (0)5935 / 70557-29  
 E info@albers-foerdertechnik.de



www.bobcat.eu